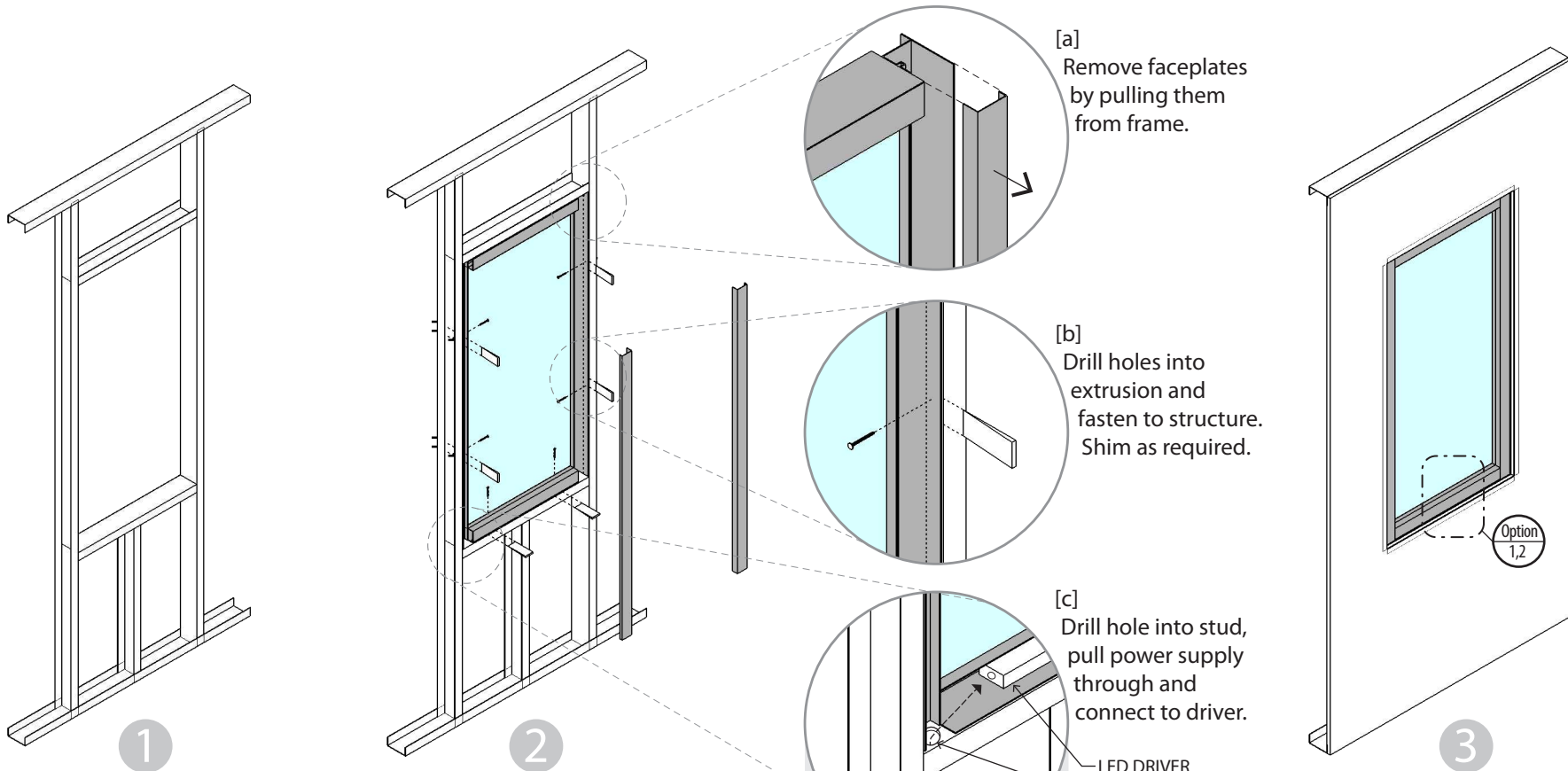


LIGHTGLASS

Installation Instructions



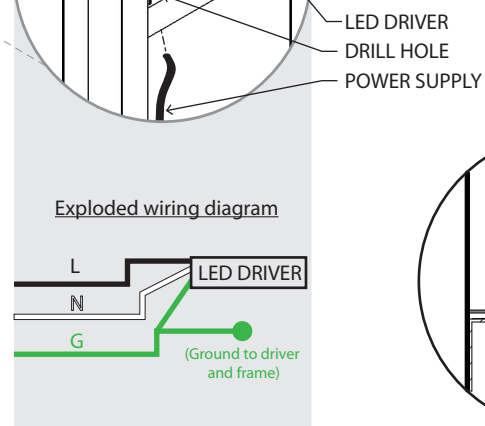
Frame rough opening.

Frame rough opening 1/2" larger than Lightglass actual dimensions. Refer to table below.

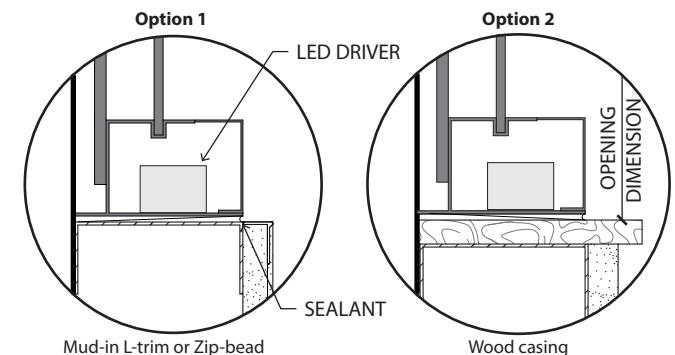
Lightglass	Actual Dimensions
13x13	13 x 13
13x49	13 x 49
25x25	25 x 25
25x49	25 x 49
18x18	18 x 18
18x42	18 x 42
42x42	42 x 42

Install Lightglass.

- [a] Remove faceplates.
- [b] Insert frame into opening and fasten to structure.
- [c] Make electrical connections.



Faceplates must be removable.



Note: Do not block removable faceplate. Apply sealant as required.

Note: Ensure casing opening dimensions to accommodate Lightglass.